



170年的螺紋技術

Thread Milling Cutters

Shell Type Thread Milling Cutters

Combination Tools

High Performance Thread Cutting Dies

High Performance Thread Rolling Dies

Precision Thread Gauges

螺紋銑牙刀 板牙 環規 栓規



同嶺企業有限公司

高雄市鼓山區民泰街54號

www.asp-boss.com

sales@asp-boss.com

service@asp-boss.com

高雄 TEL:+886-7-5524388

FAX:+886-7-5524389

台南 TEL:+886-6-2824030

FAX:+886-6-2817942

台中 TEL:+886-4-22808151

FAX:+886-2-26897934

台北 TEL:+886-2-26881944

FAX:+886-2-26897934

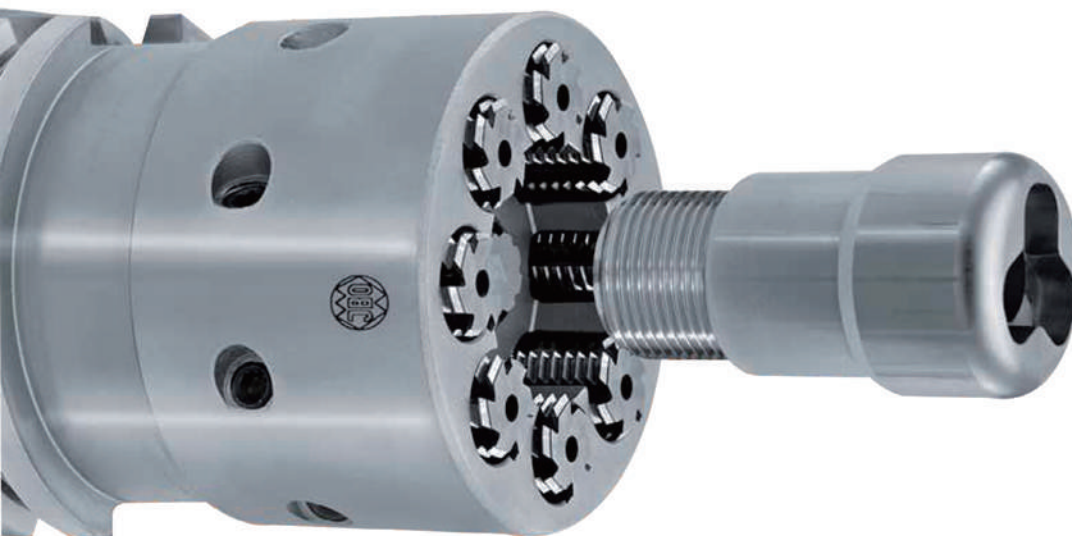
昆山同嶺貿易有限公司

江蘇省昆山市陸家鎮龍邑花園9-102室

TEL:+86-0512-57877676 FAX:+86-0512-57870487

Technical drawing of a metal component with a total height of 100mm and a base diameter of $\varnothing 40$. The component features a tapered top section and a central threaded hole. Key dimensions and features include:

- Top section: Tapered, with a height of 100mm.
- Central hole: Diameter $\varnothing 12$, length 22mm.
- Flange: Diameter $\varnothing 32$, thickness 22mm.
- Base: Diameter $\varnothing 40$, with a threaded section of length 22mm.
- Thread: $BG\dot{F}Z\ M12\ 2.5 \times d$ with 22mm pitch.
- Material: $Z2\ mit\ IK$.
- Standards: $DIN\ 69871 - SK-40\ A0$ and $TC01\ 110202$.
- Other labels: $VC02\ 1103$ and $Anfas\ \varnothing 13$.



Solid Carbide Thread Milling Cutters

铣牙刀

GF



Solid carbide thread milling cutter
Universal tool for cost effective production of internal screw threads.

泛用型內螺紋鎢鋼铣牙刀

GFS



Solid carbide thread milling cutter with chamfering capability
Universal tool for cutting internal screw threads. Increased productivity resulting from combined thread milling and chamfering in a single machining cycle without tool changing.

內螺紋铣牙及倒角的複合式鎢鋼刀

GFM



Solid carbide wide range thread milling cutter
Universal tool for cutting a wide range of thread- Φ with an identical pitch.

泛用型同牙距多尺寸的鎢鋼螺紋铣牙刀

GFS-ST



Solid carbide thread milling cutter with chamfering capability for steel and tough materials
Special version of GFS cutter for internal screw threads with chamfer.

適用於鋼材及難切削材內螺紋及倒角的複合式鎢鋼刀

GFM-ST



Solid carbide wide range thread milling cutter for steel and tough materials
Special version of GFM cutter for cutting a wide range of thread- Φ with an identical pitch.

適用於鋼材及難切削材的同牙距多尺寸鎢鋼螺紋铣牙刀.

GFM-STL



Solid carbide wide range thread milling cutter, extended version for steel and tough materials
Special cutter similar to GFM-ST for cutting a wide range of thread- Φ with an identical pitch. Optimum tool for cutting deep threads without axial displacement of tool.

加長型適用於鋼材及難切削材的同牙距多尺寸鎢鋼螺紋铣牙刀

GFH



Solid carbide thread milling cutter for hard materials
Special version of GF cutter for cutting internal threads in tempered and hardened steels in the 54-63HRC range.

超硬材(54-63HRC)的鎢鋼铣牙刀

GFE



Solid carbide thread milling cutter with single ring of teeth
Universal tool for cutting internal threads ranging from M1.0mm to M3.5mm

小尺寸(M1.0-M3.5)的鎢鋼铣牙刀

BGF



Solid carbide drill thread milling cutter
Combines drilling with thread milling and chamfering in the production of internal threads. Maximises productivity by eliminating tool changing. Particularly suitable for machining non-ferrous metal and cast iron.

鑽孔、铣牙、倒角，鎢鋼三合一刀具
適合非鐵金屬及鑄鐵

BGF 3



Solid carbide drill thread milling cutter with 3 flutes
Optimised version of the BGF tool, particularly suitable for machining materials that yield short chips. Because of the greater number of cutting edges, this tool offers enhanced performance with improved centring.

鑽孔、铣牙、倒角，鎢鋼三合一刀具，
特別適合於短屑工件的加工，由於較大的
切削刃可以提升工件的同心精度

Precision Thread Gauge

牙規

LD	GD	AD	LD
<p>LD 通止規雙端栓規，依DIN2280規範，尺寸至M40 LD Thread plug gauge Go/No Go, Dimensions according to DIN 2280 until major-Φ40mm</p> <p>LD-TiCN 通止規雙端栓規，依DIN2280規範，高速鋼加TiCN塗層 LD-TiCN Thread plug gauge Go/No Go, HSS-TiCN-coated</p>	<p>通規端栓規 依DIN2281-1/2規範 尺寸由M40以上開始 Thread Plug gauge Go Dimensions according to DIN 2281-1 above major-Φ40mmDIN 2281-2</p>	<p>止規端栓規 依DIN2283-1/2規範 尺寸由M40以上開始 Thread Plug gauge No Go Dimensions according to DIN 2283-1 above major-Φ40mmDIN 2283-2</p>	<p>通/止規單端栓規 管螺紋專用 Thread Plug gauge Go/No Go conical with step limit</p>

GR	AR	LR
<p>通環規 依DIN2285-1規範 Thread ring gauge Go Dimensions according to DIN 2285-1</p>	<p>止環規 依DIN2291-1規範 Thread ring gauge No Go Dimensions according to DIN 2299-1</p>	<p>通止雙環規 (管螺紋專用) Thread ring gauge Go/No Go with step limit</p>

MCS

螺紋精度及深度複合式栓規
通止規雙端，解析度0.5mm

MultiCheck Scale, Thread plug gauge Go/No Go
Accuracy of reading 0.5mm



MCN

螺紋精度及深度複合式栓規
通止規雙端，解析度0.1mm

MultiCheck Vernier, Thread plug gauge Go/No Go
Accuracy of reading 0.1mm



MCD

螺紋精度及深度複合式栓規
通止規雙端，解析度0.01mm

MultiCheck Digital, Thread plug gauge Go/No Go
Accuracy of reading 0.01mm

